

Objectives

The overall objective of MyPath is to develop and implement innovative digital patient-centred care pathways for cancer patients.

The goals of the project are:

1. Significant improvement of the quality of and the access to patient-centred care
2. Active involvement of patients and families in plans and decisions on care
3. Reduction of variation in clinical practice
4. Optimisation of organisation and use of resources in cancer care

MyPath will ultimately reduce the physical, emotional, and economic burden linked to cancer.

Key Facts

MyPath is a five-year Research and Innovation Action funded by the European Union's Horizon Europe programme.

Concept: Develop and implement innovative patient-centred care pathways for cancer patients

Coordinator: Prof. Stein Kaasa, Oslo University Hospital

Budget: 6.5 million euro

Duration: 01/09/2022 – 31/08/2027



Funded by the
European Union



MyPath is funded by the European Union (grant no. 101057514) and supported by Innovate UK and the Swiss State Secretariat for Education, Research and Innovation (SERI). Views and opinions expressed are however those of the author(s) only and do not necessarily reflect those of the European Union or the European Health and Digital Executive Agency (HADEA). Neither the European Union nor the granting authority can be held responsible for them.

Project Partners

The project brings together 15 partners to collaboratively develop, test, and implement a novel digital solution for patient-centred cancer care.



Research and clinical partners

- Oslo University Hospital, Norway
- University of Edinburgh, United Kingdom
- Fondazione IRCCS Istituto Nazionale dei Tumori, Italy
- Vrije Universiteit Brussel, Belgium
- Instituto de Investigación Sanitaria, Spain
- University of Leeds, United Kingdom
- Maastricht University, Netherlands
- Copenhagen University Hospital, Denmark
- Hospice Casa Sperantei, Romania
- The Leeds Teaching Hospitals NHS Trust, United Kingdom



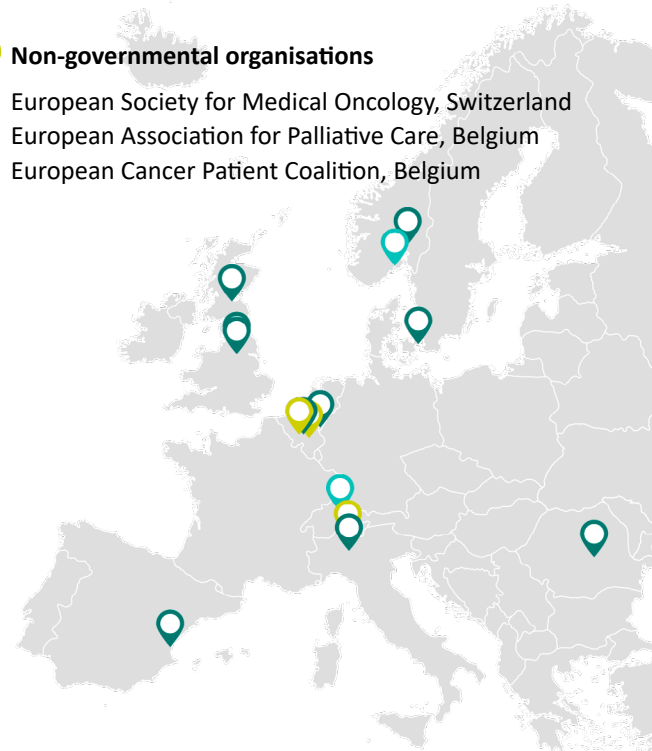
Industry and SME

- DNV Imatis AS, Norway
- accelopment Schweiz AG, Switzerland



Non-governmental organisations

- European Society for Medical Oncology, Switzerland
- European Association for Palliative Care, Belgium
- European Cancer Patient Coalition, Belgium



MyPath



The digital solution to patient-centred cancer care

mypath-cancercare.eu



Developing and implementing innovative patient-centred care pathways for cancer patients

Several randomised controlled trials have provided evidence that the integration of patient-centred care as part of standard oncology care results in better patient and caregiver outcomes. Benefits include better symptom management, less psychological distress and a better quality of life, and increased satisfaction with the care.

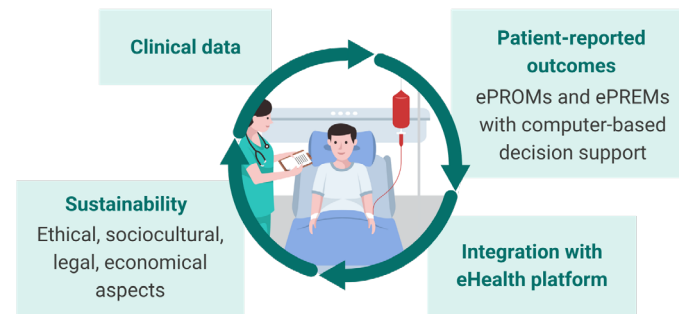
Despite the substantial evidence as well as widespread clinical practice guidelines speaking for the effectiveness of patient-centred care, this has not translated into clinical practice in cancer care to this day.

The main goal of MyPath is to develop and implement digital patient-centred care pathways with incorporated PROMs and PREMs. By incorporating digital decision support and shared decision-making between patients and healthcare providers in a user-friendly digital platform, we are finding a way of implementing what we know works.

Concept

To generate individualised patient-centred care pathways, MyPath will combine clinical content with Patient-Reported Outcome and Experience Measures (PROMs and PREMs). The resulting solution will be made available on a user-friendly eHealth platform.

MyPath will be implemented in nine European cancer centres. The organisational, cultural, and societal contexts of the participating sites will be thoroughly investigated to ensure successful and sustainable implementation.



Impact

The innovative MyPath, based upon scientific evidence, will improve the quality of life of patients and family, promote patient empowerment, optimise the use of healthcare resources, and change the way healthcare providers work.

Our main ambition is to deliver a sustainable solution for cancer patients for improved supportive, palliative, survivorship, and end-of-life care. MyPath will be adapted for implementation to improve cancer care across boundaries, cultures, and social settings in Europe.

We will deliver an implementation strategy to advise and facilitate the implementation for use across Europe to improve the quality of patient-centred cancer care, which will make MyPath ready for universal use.

Project Timeline



Period 1

September 2022 – August 2024



Period 2

September 2024 – August 2026



Period 3

September 2026 – August 2027

Content and structure design

The MyPath solution will be developed and refined through iterative pilot trials, while the clinics are being prepared for uptake in clinical care. Ongoing background evaluation will shape the formal implementation study in period 2.

Implementation

MyPath will be implemented in nine clinical centres. Simultaneous qualitative and quantitative data collection and evaluation will contribute to the continuous improvement of MyPath and its implementation strategy.

Final evaluation and finalisation

Based on the evaluation of the implementation process, we will deliver a final version of MyPath and an accompanying implementation strategy, ready for Europe-wide use.